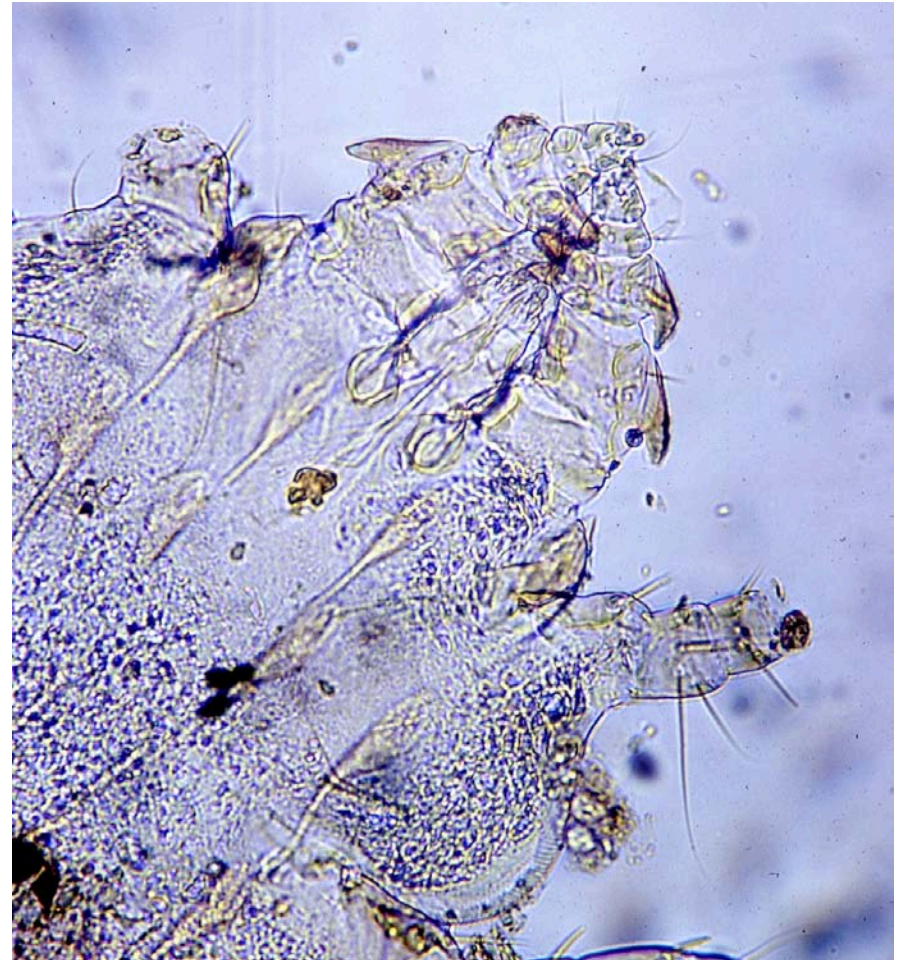
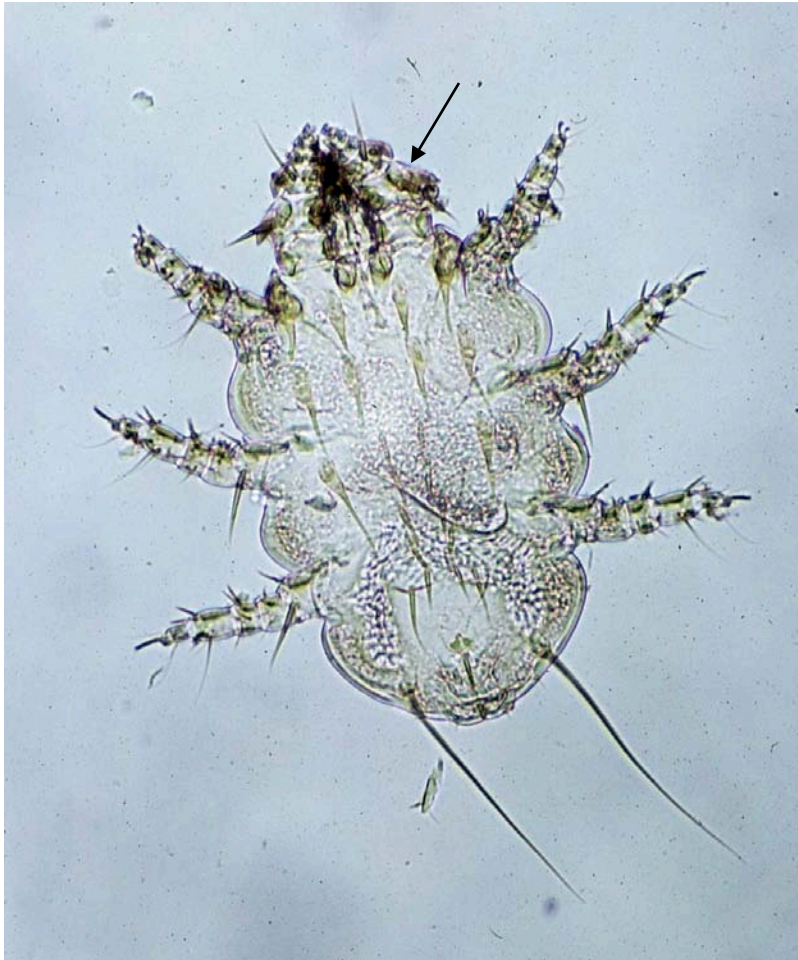


Archemyobia inexpectatus. This opossum parasite is a typical “myobid” mite, with the 1st pair of legs (arrow) modified for grasping hairs, a pair of long posterior setae, finely striated body, and “inflated” setae.



Archemyobia inexpectatus.

Note finely striated body,
characteristic of “myobids”,
and large setae.



Archemyobia inexpectatus.
Box in A enlarged in B.

